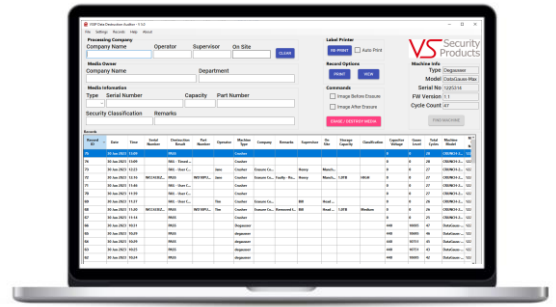


DATA DESTRUCTION AUDITOR SOFTWARE

BY VS SECURITY PRODUCTS LTD

- All LG degaussers and destroyers are compatible with our Data Destruction Auditor (DDA) Software.
- The program is a windows software package that allows you to create records of media erasure.
- It connects to your LG degausser/destroyer via USB, allowing you to operate the machine and record real-time erasure data to the record.
- The software can be downloaded from our website.



1 DOWNLOAD

Head to our website veritysystems.com and navigate to the downloads section.

Download the latest version of the DDA software.

If you are unable to locate it, please email support@vssecurityproducts.com for the latest download link.

2 INSTALLATION

Run the installer file and follow the on-screen instructions.

3 DRIVER INSTALLATION

Connect your degausser / destroyer to your PC using the USB cable.

Windows should automatically find and install the drivers for the USB device.

You may need to re-start your PC after installing the software and USB drivers.

4 OPTIONAL ACCESSORIES

The DDA software can also be used with the following accessories:

Barcode Scanner

VS PN:

Speed up data entry by scanning the serial and part numbers from media.



Label Printer

VS PN:

Automatically print labels that can be stuck on the media, giving details of erasure.



Verity Systems DD Imager

VS PN:

Capture images of the media before and after the erasure process.

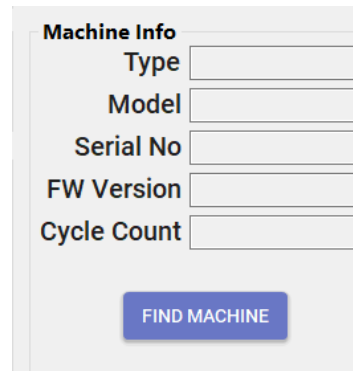
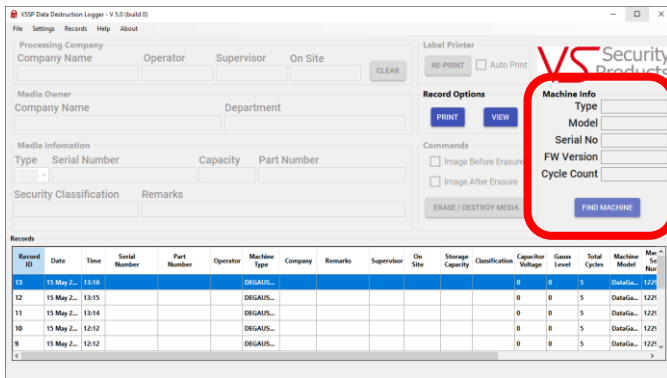


PLEASE TURN OVER FOR A QUICK START GUIDE

VSSP LOGGER QUICK START GUIDE

I CONNECT TO THE MACHINE

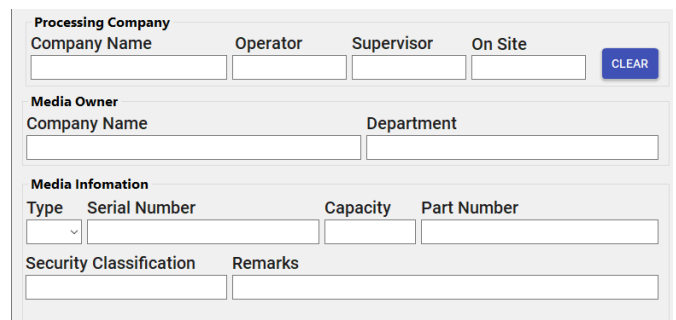
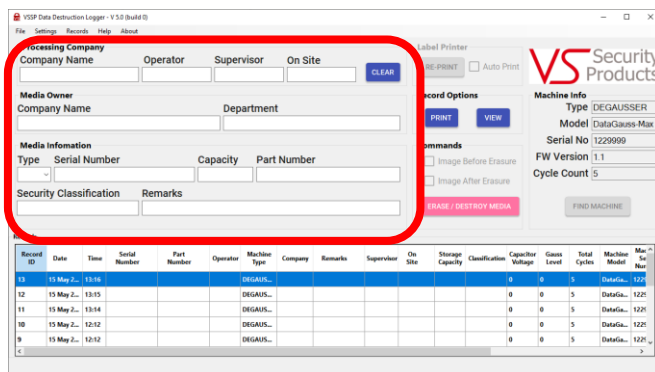
- a) Connect the machine to the PC with the USB cable.
- b) Switch the machine on.
- c) Click 'Find Machine'.



The software should locate your machine and automatically fill in the 'Machine Info' section on the right.

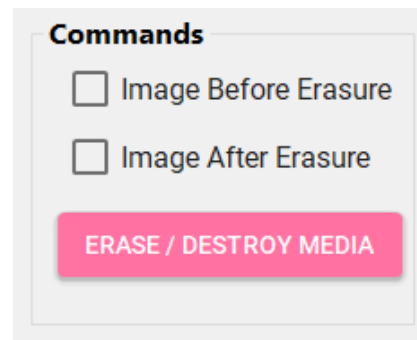
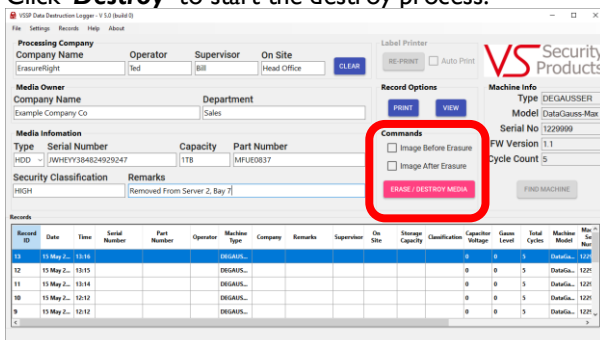
2 FILL IN THE RECORD INFORMATION

- a) Enter the details for the record.
Note: The fields visible and mandatory can be set in the settings menu.



3 START THE CYCLE

- a) Select if you want to take an image of the media **before** erasure.
- b) Select if you want to take an image of the media **after** erasure.
- c) If you are taking a before image, place the media under the camera, otherwise, place the media inside the machine.
- d) Click '**Destroy**' to start the destroy process.



For a full user guide, please open the DDA software and click 'Help' in the top menu bar.