

# PUMA



4800dpi disc printing

True, photo-realistic printing

Tiny ink-droplet (4pl) technology for finer printing  
& quicker drying times

Easy integration with Verity Systems automated  
duplicator series

Includes easy-to-use professional  
Software

Uses GENUINE HP inks



The Puma brings professional print quality to the in-house production of CDs, DVDs and Blu-Ray, delivering outstanding photo-quality images directly onto the surface of discs enabling customers to choose colorful backgrounds and images that reflect their company.

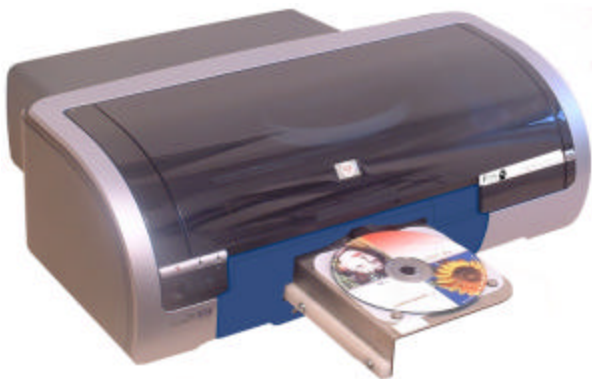
The Puma features HP's unique PhotoREt IV color-layering technology which is able to deliver vivid, true-to-life photos. PhotoREt IV can deliver 289 levels of shade for each color and offers a complete palette in excess of 1.2million colors. The outstanding print quality is also achieved through the drawer mechanism, which holds the discs in place to such a high degree of accuracy, that the finest inkjet printing can take place.

The Puma boasts a unique interface making it the easiest to use and most accurate disc printer by far. The Disc Mask ensures precision printing of designs time after time and the quick and simple calibration process ensures perfect layout.

As a desktop printing solution, the Puma is ideally suited for the low-medium volume/small business user, however, the Puma can also be easily integrated with a Verity Systems autoloader or automated disc copier.



Print Technology:	HP Thermal Inkjet
Media Handling:	Inkjet Printable CDs, DVDs, Blu-Ray, CD Business Cards, Mini Discs
Maximum Resolution:	4800 x 1200 dpi 16.7 million colors
Cartridges:	Dual Ink Cartridges (Genuine HP inks) C8856A Black Cartridge C8857A Tri-Color (CMY) Cartridge
Print Speeds:	25% coverage mono @ normal text-quality approx. 16sec per disc 25% coverage mono @ normal inkjet-quality approx. 19sec per disc 100% coverage color @ normal inkjet-quality approx. 24sec per disc 100% coverage color @ best inkjet-PhotoREt quality approx. 52sec per disc 100% coverage color @ photo-quality PhotoREt approx. 134sec per disc
Label Software:	CD Label Designer
Minimum Systems Requirements:	Windows 2000, Pentium 133MHz, 64 MB RAM Windows XP, Pentium 233 MHz, 128 MB RAM Window Vista Business
Interface/Connectivity:	USB 2.0 High Speed Compatibility Centronics Parallel IEEE-1284 compliant
Dimensions (WxHxD):	17.6" x 7.6" x 14" 447mm x 152mm x 356mm
Weight:	Approx. 12.2lbs (5.5kg) Without Cartridges
Voltage:	100~240V 50~60Hz
Operation:	PC Required



## Warranty

12 months back to base, all parts and labor included.  
Print head is warranted for 30 days .  
Extended warranties also available.

## Options

Mini Disc Adaptor (80mm)  
Rectangular CD Business Card Adaptors (86 x 61mm)  
Saddle/Hockey Rink CD Business Card Adaptors  
(80 x 61mm & 80 x 63mm)



Verity Systems maintains a policy of continuous improvement and reserves the right to amend this specification without notice.

web: [www.veritysystems.us](http://www.veritysystems.us)

email: [sales@veritysystems.us](mailto:sales@veritysystems.us)

tel: (530) 626 9363

toll free: (800) 642 5151